

BELLA VISTA WATER DISTRICT

11368 E. STILLWATER WAY
REDDING, CA 96003
(530) 241-1085 ♦ (530) 241-8354
www.bvwd.org

SCHEDULE OF BIMONTLY WATER RATES TIERED BLOCK WATER PRICING PROGRAM

MUNICIPAL & INDUSTRIAL WATER

Residential / Rural / Commercial / Public Institutional Base Rates

5/8" Meter	\$30.70
3/4	\$32.30
1.0	\$35.60
1.5	\$42.30
2.0	\$48.90
3.0	\$62.10
4.0	\$75.40
6.0	\$101.90
8.0	\$128.40

Residential / Commercial Usage Tiers

Tier 1:	0 – 175 HCF	\$.434 per HCF (hundred cubic feet)
Tier 2:	175 – 245 HCF	\$.521
Tier 3:	> 245 HCF	\$.608

Rural Usage Tiers (Per acre of land)

Tier 1:	0 – 871 HCF	\$.434 per HCF (hundred cubic feet)
Tier 2:	871 – 1307 HCF	\$.521
Tier 3:	> 1307 HCF	\$.608

Public Institutional Usage Tiers (Per acre of land)

Tier 1:	0 – 871 HCF	\$.434 per HCF (hundred cubic feet)
Tier 2:	871 – 1307 HCF	\$.521
Tier 3:	> 1307 HCF	\$.608

Water Treatment Plant Improvement Loan Repayment

\$14.00 bimonthly for all customers.

Note: Rural rates require a 1.0 inch meter or larger.

IRRIGATION WATER

Agricultural and Aquaculture Base Rates

1.0" Meter	\$53.10
1.5	\$59.70
2.0	\$66.30
3.0	\$79.60
4.0	\$92.80
6.0	\$119.30
8.0	\$145.80

Agricultural Usage Tiers (Per acre of land)

Tier 1:	0 – 2.5 acre feet/acre	\$32.35 per acre foot
Tier 2:	2.5 – 3.55 acre feet/acre	\$38.82
Tier 3:	> 3.55 acre feet/acre	\$45.29

Aquaculture Usage Tiers (Per acre of land)

Tier 1:	0 – 6.25 acre feet/acre	\$32.35 per acre foot
Tier 2:	6.25 – 8.75 acre feet/acre	\$38.82
Tier 3:	> 8.75 acre feet/acre	\$45.29

Water Treatment Plant Improvement Loan Repayment

\$14.00 bimonthly for all customers.

NDU Credit

Agricultural and aquaculture accounts that have no domestic use will receive a \$4.00 bimonthly base charge reduction referred to as a NDU credit.

Note: Agricultural and aquaculture rates require a 1.0 inch meter or larger.

WATER EQUIVALENTS TABLE

1 Cubic Foot = 7.48 gallons	=	62.4 pounds of water
1 Acre Foot = 43,560 cubic feet	=	325,900 gallons

An acre foot covers (1) foot of land (1) foot deep

1 cubic foot per second (cfs) = 450 gallons per minute/646,320 gallons per day

For 24 hours	=	1.983 acre feet
For 30 days	=	59.5 acre feet
For one year	=	724 acre feet

PROCEDURE FOR METER READING

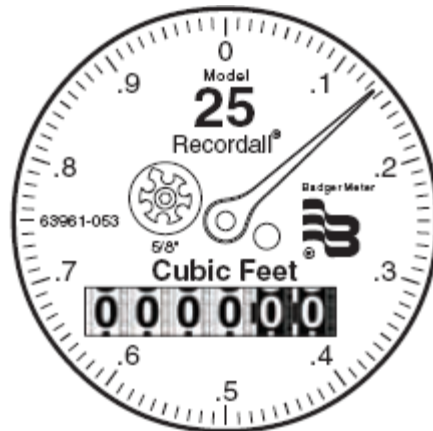
If register lens is dirty, a light wipe with a damp cloth will clear lens for an accurate reading. Always remember to close the register cover after reading meter to avoid exposure to cracking or scratching of lens.

One of the most important factors in a correct reading is to note the proper number of digits. Read the meter register from left to right.

EXAMPLE OF A CUBIC FOOT METER:

Low Flow Indicator, aka Leak Indicator

This small dial will rotate if water is passing through the meter. It is an indication of very small flows that would be visually undetectable on the regular sweep hand. If no one is using water, but the dial is turning, you may have an undiscovered leak in your plumbing system.



Sweep Hand

On This meter, one rotation of the sweep hand is equal to one cubic foot or 7.48 gallons

Cubic Foot Odometer

Usually, the last numbers (in black) on the odometer are non-rotating or printed. For every 100 rotations of the sweep hand, the white digits on the odometer will increase by one to reflect 100 cubic feet of water use (748 gallons)

BILLING: The water meter will be read as nearly as possible on the same day every two (2) months. You will be billed for water service bimonthly. The bills are due and payable on the date of receipt and become delinquent twenty-two (22) days thereafter. Payments can be made to the District office by mail, in person, or online at:

<http://epay.bvwd.org>

OFFICE HOURS: The district office is open from 8:00 a.m. to 5:00 p.m., Monday through Thursday, and 8:00 am to 4:00 pm on Fridays, except holidays. For after-hour emergencies, there is an answering service on duty for your needs.

This Institution is an Equal Opportunity Employer

Effective May 3, 2010