

BELLA VISTA WATER DISTRICT

11368 E. STILLWATER WAY

REDDING, CA 96003

(530) 241-1085 □ FAX (530) 241-8354

SCHEDULE OF BIMONTHLY WATER RATES TIERED BLOCK WATER PRICING PROGRAM

MUNICIPAL & INDUSTRIAL WATER

Residential/Commercial/Public-Institutional Rates

5/8" Meter - Base Rate	\$27.00
3/4	27.00
1.0	32.00
1-1/2	34.00
2.0	38.00
3.0	43.00
4.0	47.00
6.0	53.00
8.0	61.00
10.0	70.00

Rural Rate

Note: Rural rates require a 1.0-inch meter or larger.

1.0" Meter - Base Rate	\$32.00
1-1/2	34.00
2.0	38.00
3.0	43.00
4.0	47.00
6.0	53.00
8.0	61.00
10.0	70.00

Residential/Commercial Tiers

1 0 - 11,600 cf	\$0.46 per 100 cf
2 11,600 - 16,100	0.51
3 > 16,100	0.56

Rural Tiers

1 0 - 31,400 cf	\$0.46 per 100 cf
2 31,400 - 43,560	0.51
3 > 43,560	0.56

Public Institutional Tiers

1 0 - 2.5 acre ft/acre	\$0.46 per 100 cf
2 2.5 - 3.55 acre ft/acre	0.51
3 > 3.55 acre feet/acre	0.56

Plus the Central Valley Project Improvement Act Restoration Fee @ \$0.023 per 100 cf and \$14.00 bimonthly repayment charge for the Water Treatment Plant Improvements required by the California Department of Health Services.

IRRIGATION WATER

Agricultural Rate*

1.0" - Base Rate	\$56.00
1-1/2	58.00
2.0	60.00
3.0	64.00
4.0	67.00
6.0	72.00
8.0	77.00

Tiers

1	0 - 2.5 acre feet/acre	\$23.10 per acre foot
2	2.5 - 3.55 acre feet/acre	25.20 "
3	> 3.55 acre feet/acre	28.00 "

Aquaculture Rate*

1.0" - Base Rate	\$56.00
1-1/2	58.00
2.0	60.00
3.0	64.00
4.0	67.00
6.0	72.00
8.0	77.00

Tiers

1	0 - 6.25 acre feet/acre	\$23.10 per acre foot
2	6.25 - 8.75 acre feet/acre	25.20 "
3	> 8.75 acre feet/acre	28.00 "

NOTE: Agricultural and aquaculture rates require a 1.0-inch meter or larger.

*All accounts will be assessed a \$14.00 bimonthly repayment charge for the Water Treatment Plant Improvements required by the California Department of Health Services.

Agricultural and aquacultural accounts that have no domestic use will receive a \$12 bimonthly base charge reduction referred to as a NDU credit.

WATER EQUIVALENTS TABLE

1 Cubic Foot = 7.48 gallons	=	62.4 pounds of water
1 Acre Foot = 43,560 cubic feet	=	325,900 gallons
An acre foot covers one (1) acre foot of land one (1) foot deep.		
1 cubic foot per second (cfs) = 450 gallons per minute/646,320 gallons per day		
For 24 hours	=	1.983 acre feet
For 30 days	=	59.5 acre feet
For one year	=	724 acre feet

PROCEDURE FOR METER READING.

If register lens is dirty, a light wipe with a damp cloth will clear lens for an accurate reading. Always remember to close the register cover after reading meter to avoid exposure to cracking or scratching of lens.

One of the most important factors in a correct reading is to note the proper number of digits. Read the meter register from left to right.

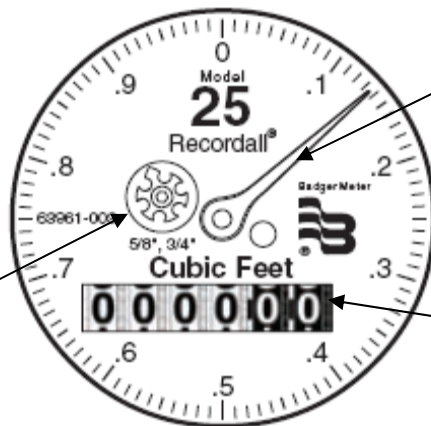
EXAMPLE OF A CUBIC FOOT METER:

Low Flow Indicator aka Leak Indicator

This small dial will rotate if water is passing through the meter.

It is an indication of very small flows that would be visually undetectable on the regular sweep hand.

If no one is using water, but the dial is turning, you may have an undiscovered leak in your plumbing system.



Sweep Hand

On this meter, one rotation of the sweep hand is equal to one cubic foot or 7.48 gallons.

Cubic Foot Odometer

Usually, the last numbers (in black) on the odometer are non-rotating or printed. For every 100 rotations of the sweep hand, the white digits on the odometer will increase by one to reflect 100 cubic feet of water use (748 gallons).

BILLING. The water meter will be read as nearly as possible on the same day every two (2) months. You will be billed for water service bimonthly. The bills are due and payable on the date of receipt and become delinquent twenty (20) days thereafter. Payments can be made to the District office by mail or in person.

OFFICE HOURS. The District office is open from 8:00 a.m. to 5:00 p.m., Monday through Thursday, and 8:00 a.m. to 4:00 p.m. on Friday, except holidays. For after-hour emergencies there is an answering service on duty for your needs.